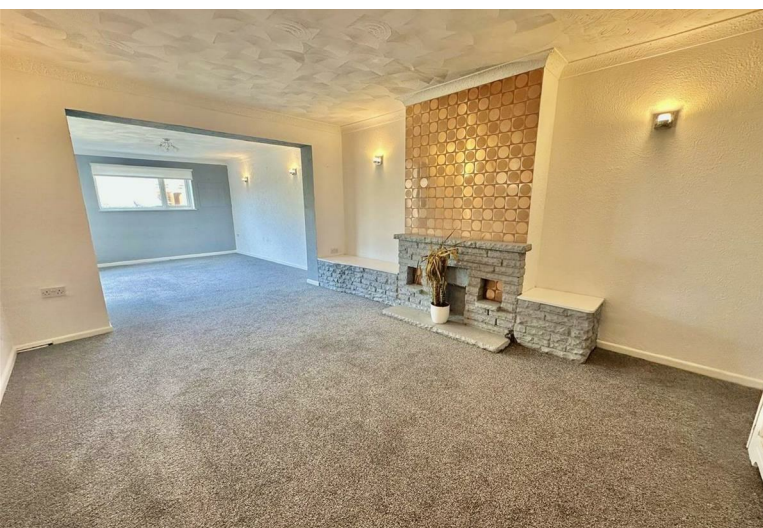


3  
BED

Planning Permission Granted  
28, Seaview Road, Peacehaven, BN10 8QL



Price £410,000

Freehold

**phillipmann**  
we do more

[www.phillipmann.com](http://www.phillipmann.com)





Total floor area 108.0 sq.m (1,162 sq.ft) approx

## inbrief...

3-Bed Bungalow with Planning Permission – Seaview Road, Peacehaven

A rare opportunity to purchase this spacious three-bedroom bungalow on a generous corner plot in a popular, residential area of Peacehaven within a short walk to local shops, primary / secondary schools and main bus routes to Brighton/Eastbourne.

The property already benefits from approved planning permission to:

- Extend to a 4-bed, 2-bath home
- Create a two-car driveway
- Convert the loft (plans available)

Inside, you are welcomed by a spacious central hallway with each room leading off for a natural flow. The heart of the home is the impressive 30ft open-plan living and dining room, filled with light and opening directly onto the rear patio and garden. A large kitchen, positioned just off the living room, also offers direct access to the garden and creates a sense of privacy. The property provides three well-proportioned bedrooms, two of which are dual aspect, flooding the rooms with natural light. Completing the layout is a separate WC and family bathroom.

Outside features include:

- Large front garden (with planning to convert into driveway)
- Rear garden with patio
- Detached garage & off-road parking via Jay Road

This home is perfect for those seeking comfortable living now with exciting scope to add value, space to ultimately create your forever home.

Lewes District Council Planning Portal - LW/24/0687



EPC - E

Council Tax Band - D

moreinfo...



Phillip Mann Peacehaven Office  
226-230 South Coast Road, Peacehaven, BN10 8JR  
01273 586622

To see more details on this & all our homes go to  
[www.phillipmann.com](http://www.phillipmann.com)